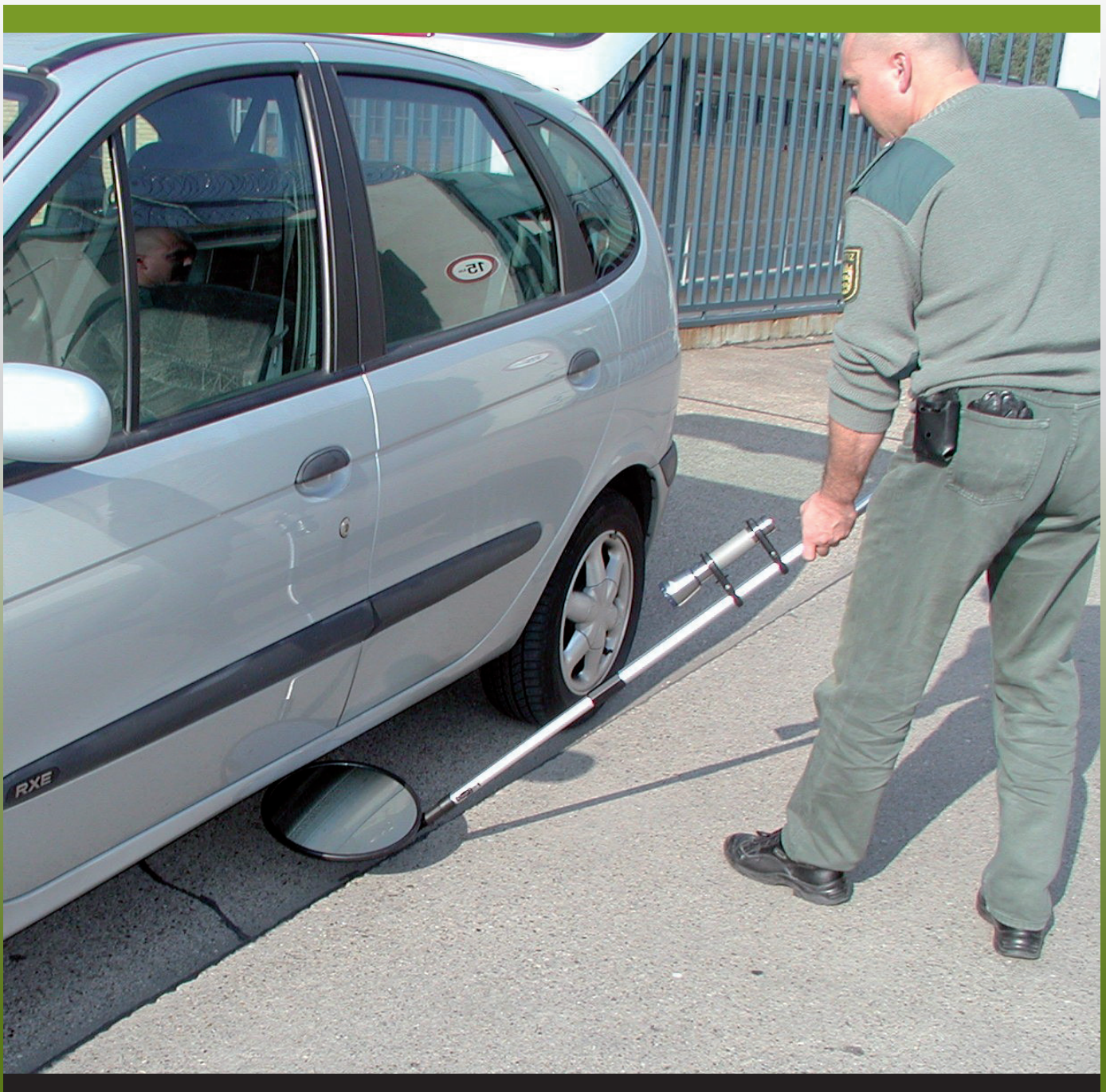




EFIS

Search mirrors and video inspection devices for search and vehicle inspection by customs, police, military or by security companies

- EFIS 1: Inspection mirror, general purpose
- EFIS 4: Under vehicle search mirror, wheeled
- EFIS V: Video inspection device
- Safe C: Inspection mirror, pocket version



Universal Inspection mirror

- **lightweight, rugged and weatherproof**
- **Xenon light**
- **various mirror heads**
- **wheels for large mirror diameter**
- **extendable telescopic handle**

The EFIS inspection mirrors were designed to support a fast inspection of vehicles and parts of buildings which are difficult to access. There are various fields of application: vehicle undersides, baggage racks, areas over or under furniture, hollows and space in between as well as difficult to access building parts can be inspected rapidly.

This assists the police, customs, military and security companies to carry out a substantial accurate and thorough inspection as well as a quick handling at the inspection points.

The lightweight and rugged design of the handheld EFIS 1 and its stepless adjustment make it easy to use in different working conditions. The telescopic handle is fitted with clamps to carry a torch with a 0,8 A Xenon bulb for operation in low light conditions.

The pivoting mirror is slightly convex to enlarge the view. Different sizes of mirror heads can be supplied upon demand. Mirror heads of a diameter of Ø 300 mm and more are fitted with wheels.



EFIS 1 inspection mirror with torch

Technical Data

Telescopic handle	Extendable from 1100 to 2100 mm length
Version	anodised aluminium, rotation protected
Mirror head measures without protective frame	approx. 120 x 170 mm approx. 135° pivotable
Lamp type	splash waterproof
Light	2,4 V / 0,8 A Xenon bulb
Batteries	2x 1,5V D-cell (LR20) or 2x 1,2V rechargeable NiMH D-cell batteries
Weight with lamp	approx. 1,3 kg
Operation time	approx. 10 – 12 h continuous operation

NSN 5120 - 12 - 349 - 3304

Upon request the following special versions can be supplied: square inspection mirror 150 x 250 mm, halo shaped inspection mirrors of Ø 300 mm (measures without protective frame), mirrors made from polished stainless steel.



EFIS 1 Xenon bulb

Under vehicle search mirror

- easy to handle, sturdy, weatherproof
- with illumination
- mechanically adjustable mirror head
- wheeled
- demountable for transportation

The wheeled search and inspection mirror EFIS 4 is an efficient and simple to use tool for a fast inspection of vehicles.

The large, swivel mounted mirror head is available as a standard glass or a special stainless steel version. The metal version has proven its worth when used in harsh conditions and in continuous operations. The device is equipped with 10 splash water-proof LEDs of low power consumption.

The construction is ergonomically and the telescopic handle can be adjusted to suit tall and short operators. It can be extended to reach under large vehicles.

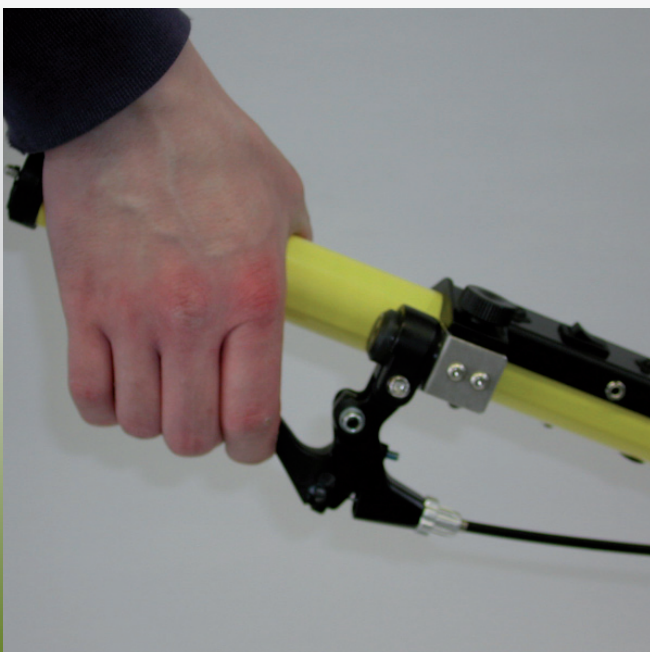
The EFIS 4 incorporates a battery compartment for three commercial 1,5 V C-cell batteries (type LR 14) which provide the power for the LEDs. Batteries are easy and fast to change. Upon request rechargeable Ni-MH batteries and a robust battery charger are available as accessories.

A 200 x 400 mm sized mirror head is available as option.

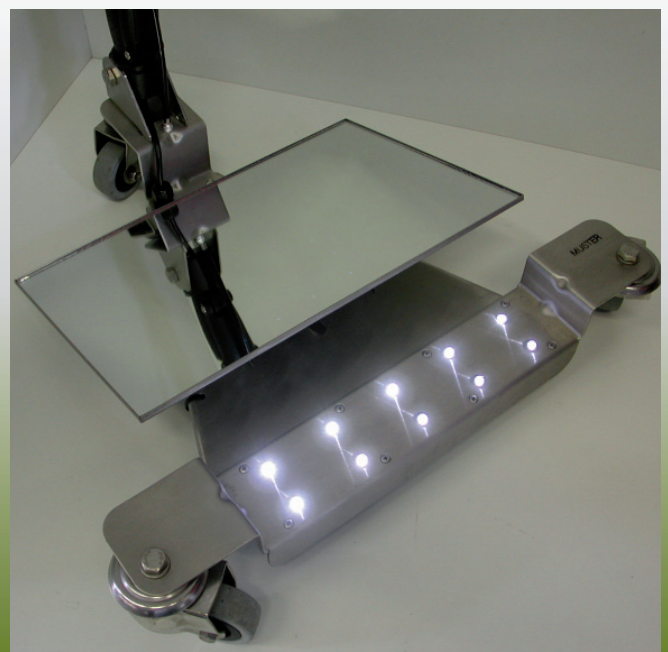
Technical Data

Measures	
Chassis	approx. 400 x 400 x 110 mm
Spiegel	approx. 300 x 200 mm
Teleskoprohr	approx. 1000 – 1225 mm
Illumination	10 x special LEDs
Power consumption	approx. 500 mA
Power supply	3 x 1,5 V C-cell (LR 14) or 3 x rechargeable 1,2 V C-cell type Ni MH battery
Weight	approx. 4 kg
Operation time	approx. 70 h with dry alkaline batteries, approx. 50 h with rechargeable batteries

NSN 5120 - 12 - 368 -3342



Optional remote control for mirror adjustment



Illuminated EFIS 4 under vehicle mirror

Video inspection unit

- clear view in day and night operation
- wide extension and adjustment range
- compact video search head
- versatile application

The EFIS V video scope completes the EBINGER range of viewing tools. Different to the optic mirrors EFIS V applies a miniature CCD camera and a colour monitor.

Due to the small size of the video head and the wide extension of the telescopic handle (extendable up to 3m) even very difficult to access areas can be inspected easily.

EFIS V is also used for inspection of wheel wells of aircrafts. The device is widespread in use with police, customs, prison service and commercial security companies.

The simplicity of use, the large extension range of the telescopic handle and the high image quality of the TFT screen make the EFIS V a well liked and versatile tool in everyday work. The camera can be moved in various directions and tilted by a remote control knob in the handgrip. For work in low light conditions or during nighttime the camera can come with an LED infrared illumination.

The camera is available as a black & white or a colour version. Power is supplied from 8 disposable 1,5 V C-cell batteries or from a compact rechargeable Ni-MH battery pack.

Technical Data

Camera - module	CCD-chip 1/3" (colour) or 1/3" (b&w)
Camera - resolution	320 x 290 Pixel, 330 TV-lines (colour) or 500 x 552 Pixel 400 TV-lines (b&w)
Lens	F = 2,0 / f = 3,6 mm
Light sensitivity	3 Lux (colour) or 0,1 Lux (b&w)
Auto-Shutter	1/50 + 1/100000s (colour) or - to 1/10000s (b&w)
Operation temperature	-10 to + 50°C (camera) or to +40°C (screen)
Screen	TFT - active matrix 14,2 cm (5,6")
Resolution	960 x 234 Pixel
Length	1250 - 3000 mm
Power consumption	750 - 1250 mA (without/ with remote control)
Weight	approx. 3,3 kg
Battery capacity	3,8 Ah rechargeable Ni-MH
Operation time	approx. 3-5 h 8 x dry batteries LR 14 or 2-3,5 h 8 x rechargeable batteries NiMH

NSN 5836 - 12 - 370 - 5030



EFIS V video control unit



EFIS V control monitor

Pocket inspection mirror

- very handy
- day and night use
- versatile application

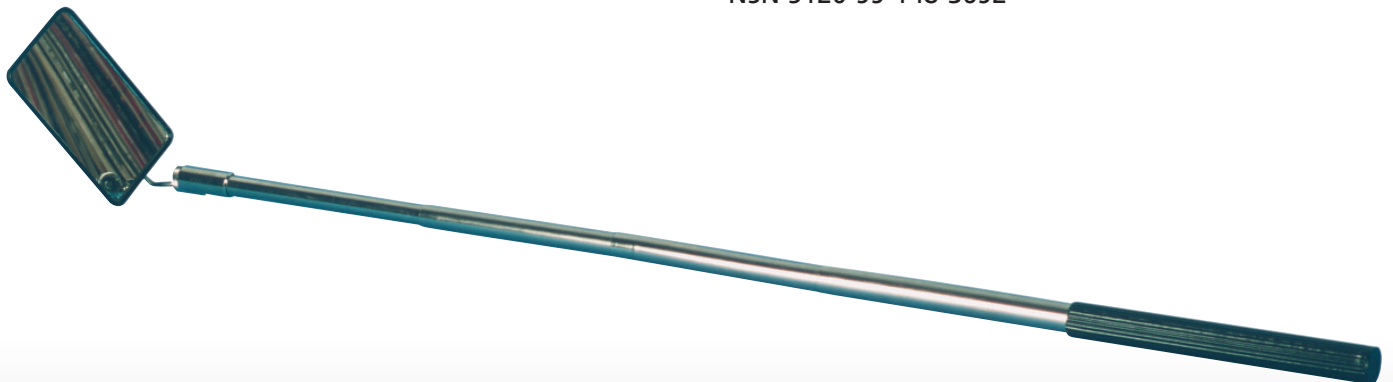
SAFE C is a collapsible and very handy pocket mirror with light for the security inspections of vehicles, ships and aircrafts. SAFE C is made from chromium plated metal and of sturdy design.

The telescope can be extended stepless from 20 to 80 cm. In the grip of the telescopic tube a battery compartment for two batteries type AAA micro cells is integrated. The light can be switched on/off by rotation of the handgrip.

Technical Data

Measures	
Mirror frame	approx. 115 x 67 mm
Mirror	approx. 110 x 60 mm
Telescope	approx. 195 - 790 mm
Illumination	2,2 V bulb
Power consumption	approx. 250 mA
Power supply	2 AAA micro cells
Weight	approx. 320 g
Operation time	approx. 4-5 h continuous operation

NSN 5120-99-148-3692



SAFE C inspection mirror



SAFE C inspection mirror



EBINGER
Prüf- und Ortungstechnik GmbH
Hansestraße 13
D-51149 Cologne
Germany
Tel. +49 2203 977-100
Fax +49 2203 36062
E-Mail: info@ebinger.org
www.ebinger.org